

A4	89
91.0	2"
1.00"/hr	.52"/hr

A7	89
91.0	2"
1.00"/hr	.52"/hr

A3	36.4
1.5"	2.00"/hr
1.5"	54.6
1.5"	1.00"/hr
A9	35.6
1.5"	.52"/hr

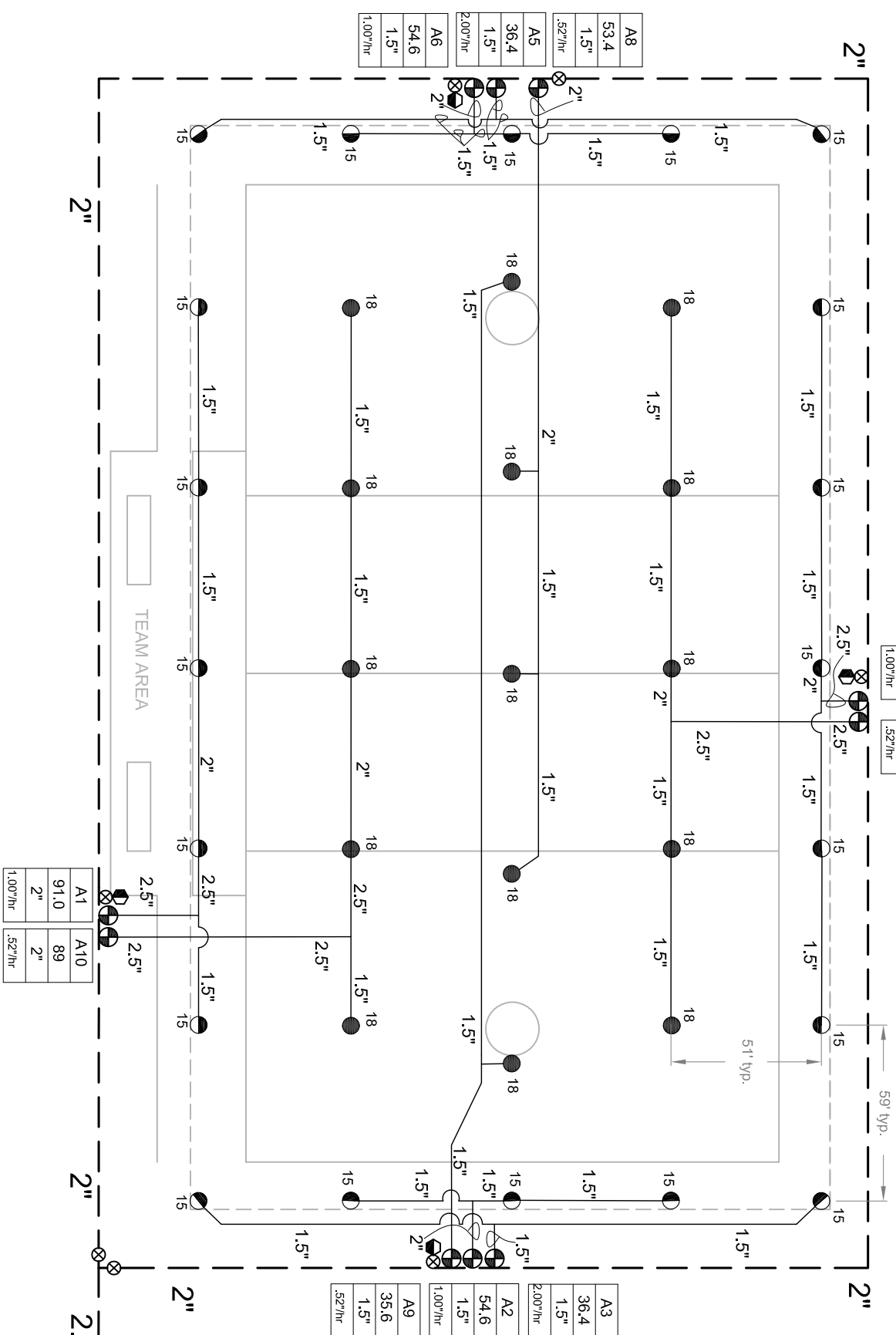
A1	89
91.0	2"
1.00"/hr	.52"/hr

WATER REQUIREMENT

- AT FIELD ELEVATION
- WITHIN 100' OF FIELD
- DOWNSTREAM OF BACKFLOW IS
- 91.0 GPM @ 90 PSI

VALVE ID GUIDE

A1	STATION NUMBER
55	GPM
1.5"	VALVE SIZE
.50"/hr	PRECIPITATION RATE



IRRIGATION LEGEND

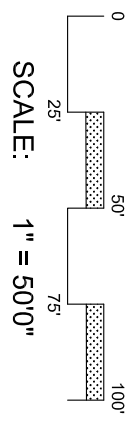
- PRODUCT DESCRIPTION**
- HUNTER I-40-04-SS-ON-XX/I-40-06-SS-ON-XX, NOZZLE AS SHOWN
 - HUNTER I-40-04-SS-XX/I-40-06-SS-XX, NOZZLE AS SHOWN
- NOZZLE PERFORMANCE:**
- #15 @ 80 PSI - 18.2 GPM 59' RADIUS
 - #18 @ 80 PSI - 17.8 GPM 62' RADIUS
- HUNTER ICV/IBV ELECTRIC CONTROL VALVE SIZE AS SHOWN
 - HUNTER HQ-44-XX-AW QUICK COUPLER VALVE (OPTIONAL)
 - HUNTER ACC-1200 SOLID STATE METAL CABINET CONTROLLER
 - RS HUNTER SOLAR-SYNC-SEN On Site Weather Sensor
 - LM HUNTER METER MINIMUM SIZE @ 91.0 GPM IS 2.0"
 - BP BACKFLOW PREVENTER SIZED TO SYSTEM GPM
- MAINLINE PIPE
 - LATERAL PIPE
 - SLEEVING
 - ISOLATION VALVE LINE SIZED
 - HFS HUNTER FLOW SENSOR IN LINE SIZED FLOW CLIK TEE "FCT"

IRRIGATION NOTES

- SPRINKLER LOCATIONS ARE TO SCALE
- PIPE LOCATIONS ARE DIAGRAMMATIC
- ALL SPRINKLERS TO BE INSTALLED ON 1" SCH 80 SWING JOINTS
- ALL COMPONENTS TO BE INSTALLED AS PER MANUFACTURERS RECOMMENDATIONS
- MAINLINE DEPTH TO BE NO LESS THAN 18"
- LATERAL DEPTH TO BE NO LESS THAN 16"
- ELECTRIC CONTROL VALVES TO BE COVERED WITH 12" VALVE BOX
- LOCATE VALVES/QCV'S OUT OF HIGH TRAFFIC AREAS
- WIRE SPLICE CONNECTIONS TO BE WATERPROOF
- QCV TO BE LOCATED IN 10" VALVE BOX
- ALL SLEEVES TO BE 2X PIPE RUN THROUGH THEM
- INSTALL ALL COMPONENTS AS PER LOCAL, STATE, FEDERAL CODES
- REFER TO HUNTER INSTALLATION DETAILS
- REFER TO HUNTER CATALOG FOR PERFORMANCE SPECIFICATIONS
- ADD HUNTER "FS" FOR DIRTY WATER VALVE
- ADD HUNTER "AS" FOR PRESSURE REGULATED VALVE

SYSTEM PERFORMANCE DATA

ZONE	SIZE	FLOW	PR	DU	SC ^(10% WINDOW)
A1	2"	91.0	1.00"	.83	1.3
A2	1.5"	54.6	1.00"	.83	1.3
A3	1.5"	36.4	2.00"	.83	1.3
A4	2"	91.0	1.00"	.83	1.3
A5	1.5"	36.4	2.00"	.83	1.3
A6	1.5"	54.6	1.00"	.83	1.3
A7	2"	89	.52"	.83	1.3
A8	1.5"	53.4	.52"	.83	1.3
A9	1.5"	35.6	.52"	.83	1.3
A10	2"	89	.52"	.83	1.3



Hunter Industries offers this plan as a general guide for estimating purposes and offers no indemnity, expressed or implied, for projects installed from this plan. Because of the many variables of every system and of every site we recommend that a qualified irrigation designer be consulted.



LACROSSE FIELD

I-40 FIVE ROW DESIGN
LOOPED MAINLINE

Hunter Industries
1940 Diamond Street
San Marcos, California 92078
SpecPro Technical Assistance
1-800-319-4796
www.HunterIndustries.com

SHEET

1 OF 1