



LAWN BOWLING  
I-20 FOUR ROW DESIGN

Hunter Industries  
1940 Diamond Street  
San Marcos, California 92078  
SpecPro Technical Assistance  
1-800-319-4796  
www.HunterIndustries.com

SHEET  
1 OF 1

IRRIGATION LEGEND

- PRODUCT DESCRIPTION  
HUNTER I-20-04-SS-XX/I-20-06-SS-XX NOZZLE AS SHOWN
- NOZZLE PERFORMANCE:  
#3 @ 40 PSI - 3.0 GPM 38" RADIUS  
#8 @ 40 PSI - 6.0 GPM 41" RADIUS
- ⊕ HUNTER IC/IBV ELECTRIC CONTROL VALVE SIZE AS SHOWN
- ⊖ HUNTER HQ-44-XX-AW QUICK COUPLER VALVE (OPTIONAL)
- ⊙ HUNTER IC-600 SOLID STATE METAL CABINET CONTROLLER
- ⊙ HUNTER SOLAR-S-SEN-SEN ON SITE WEATHER SENSOR
- ⊙ WATER METER MINIMUM SIZE @ 30 GPM IS 1.5"
- ⊙ BACKFLOW PREVENTER SIZED TO SYSTEM GPM
- BP MAINLINE PIPE
- LATERAL PIPE
- == SLEEVING
- ⊗ ISOLATION VALVE LINE SIZED
- HFS HUNTER FLOW SENSOR IN LINE SIZED FLOW CLIK TEE "FCT"

IRRIGATION NOTES

1. SPRINKLER LOCATIONS ARE TO SCALE
2. PIPE LOCATIONS ARE DIAGRAMMATIC
3. ALL SPRINKLERS TO BE INSTALLED ON .75" SCH 80 SWING JOINTS
4. ALL COMPONENTS TO BE INSTALLED AS PER MANUFACTURERS RECOMMENDATIONS
5. MAINLINE DEPTH TO BE NO LESS THAN 18"
6. LATERAL DEPTH TO BE NO LESS THAN 16"
7. ELECTRIC CONTROL VALVES TO BE COVERED WITH 12" VALVE BOX
8. LOCATE VALVES/QCV'S OUT OF HIGH TRAFFIC AREAS
9. WIRE SPLICE CONNECTIONS TO BE WATERPROOF
10. OCV TO BE LOCATED IN 10" VALVE BOX
11. ALL SLEEVES TO BE 2X PIPE RUN THROUGH THEM
12. INSTALL ALL COMPONENTS AS PER LOCAL, STATE, FEDERAL CODES
13. REFER TO HUNTER INSTALLATION DETAILS
14. REFER TO HUNTER CATALOG FOR PERFORMANCE SPECIFICATIONS
15. ADD HUNTER "FS" FOR DIRTY WATER VALVE
16. ADD HUNTER "AS" FOR PRESSURE REGULATED VALVE

WATER REQUIREMENT

-AT FIELD ELEVATION  
-WITHIN 100' OF FIELD  
-DOWNSTREAM OF BACKFLOW IS  
30 GPM @ 50 PSI

SYSTEM PERFORMANCE DATA

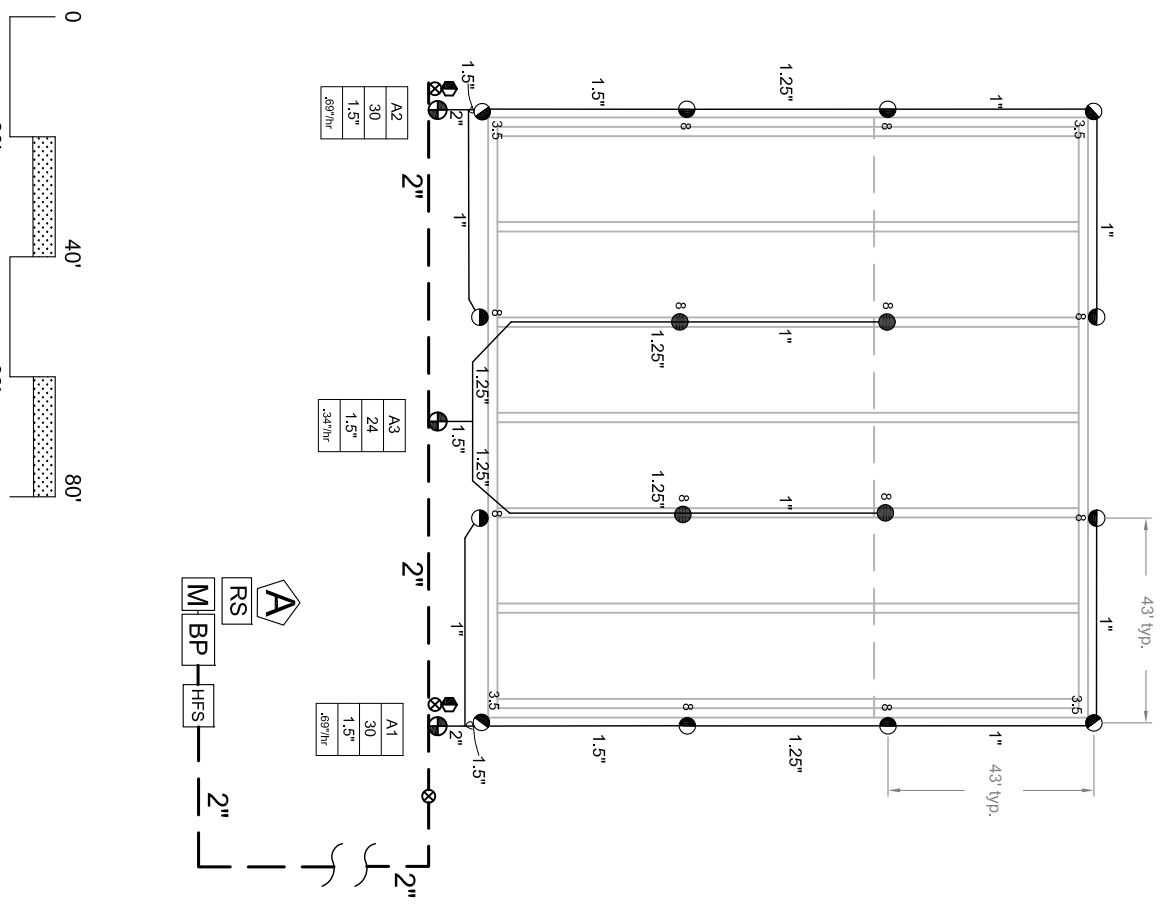
ZONE	SIZE	FLOW	PR	DU	SC
A1	1.5"	30	69"	78	12
A2	1.5"	30	69"	78	12
A3	1.5"	24	34"	78	12

VALVE ID GUIDE

A1	STATION NUMBER
55	GPM
1.5"	VALVE SIZE
50"/hr	PRECIPITATION RATE

Hunter Industries offers this plan as a general guide for estimating purposes and offers no indemnity, expressed or implied, for projects installed from this plan. Because of the many variables of every system and of every site we recommend that a qualified irrigation designer be consulted.

SCALE: 1" = 40'0"



A2	STATION NUMBER
30	GPM
1.5"	VALVE SIZE
69"/hr	PRECIPITATION RATE

A3	STATION NUMBER
24	GPM
1.5"	VALVE SIZE
34"/hr	PRECIPITATION RATE

A1	STATION NUMBER
30	GPM
1.5"	VALVE SIZE
69"/hr	PRECIPITATION RATE

