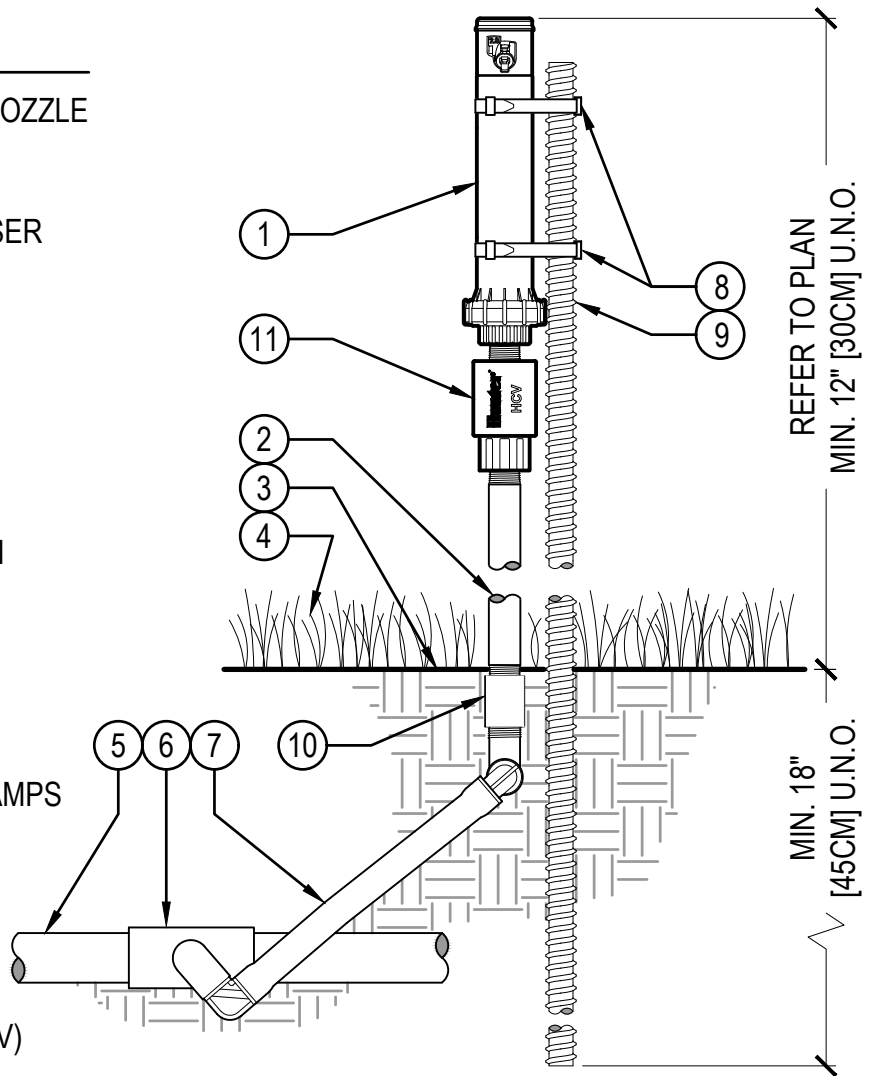


## LEGEND

- ① HUNTER ROTOR (PGJ-00), NOZZLE AND CAP PER PLAN
- ② PVC SCH. 80 THREADED RISER
- ③ FINISHED GRADE
- ④ ADJACENT LANDSCAPE
- ⑤ LATERAL PIPE PER PLAN
- ⑥ LATERAL FITTING PER PLAN
- ⑦ PREMANUFACTURED SWING ARM (HUNTER SJ OR PER PLAN)
- ⑧ STAINLESS STEEL PIPE CLAMPS
- ⑨ 1/2" [13MM] Ø REBAR
- ⑩ FPT COUPLER
- ⑪ HUNTER CHECK VALVE (HCV)



## ROTOR RISER (PGJ-00) AT GRADE WITH SUB-GRADE LATERAL, SWING ARM (SJ), AND CHECK VALVE (HCV)

