

LEED DESIGN GUIDE

Irrigation Solutions for Residential Multi-Family Homes

USGBC LEED v4.1 Certification

Hunter[®]



“Our mission is to transform the way buildings and communities are designed, built, and operated through LEED — enabling an environmentally and socially responsible environment that improves the quality of life.”

-U.S. Green Building Council

EARNING POINTS FOR WATER EFFICIENCY (WE) CREDITS *through irrigation practices*

LEED v4.1 is a roadmap for sustainable construction and maximizes outdoor water use efficiency for multi-family residential projects. Applicants can earn landscape irrigation points through Total Water Use or Outdoor Water Use credits.

Water Efficiency (WE) Credit: Water Use Reduction, Prerequisite

Intent: To reduce water consumption.

Requirement/Prerequisite: Reduce aggregate water consumption by 20% from the baseline, or earn 3 points toward the WE credit for Water Use Reduction.

Multi-family residential projects require a total water use reduction of 20% from baseline use for combined indoor and outdoor water use.

HUNTER SMART IRRIGATION SOLUTIONS

Offering a suite of control solutions to meet the needs of LEED projects



Pair any of these controllers with a Solar Sync Sensor to create an EPA WaterSense® certified smart controller.

The Solar Sync® Sensor offers on-site climate monitoring to provide automatic controller adjustments and increase irrigation efficiency.



The Hydrowise® Platform is available for a range of EPA WaterSense certified controllers that automatically adjust watering duration based on local weather data.

There are two options to receive points for the multi-family residential water use credit.

OPTION 1

Water Use Reduction, 1-10 Points

Reduce demand for water through high-efficiency products and efficient landscaping practices. Multi-family residential projects require a total water use reduction of 20% from baseline use, which accounts for 3 points. Additional reduction earns more points.

Requirement/Prerequisite: Reduce aggregate water consumption by 20% from the baseline.



Points for Reducing Indoor and Outdoor Water Use	
Percentage of reduction	Points
20%	3
25%	4
30%	5
35%	6
40%	7
45%	8
50%	9
55%	10

To calculate outdoor water use savings, use the **EPA WaterSense Water Budget Tool** at epa.gov/watersense/water-budget-tool.

Implement the following measures to further reduce landscape water consumption:

- Install smart scheduling technology. This strategy counts for a maximum reduction of 30% provided all landscape water use is controlled by a weather- or soil-moisture-based irrigation control system.
- Use captured rainwater or reclaimed water.
- Use water treated on-site or conveyed by a public agency specifically for non-potable uses (water from naturally occurring surface water bodies, such as streams and rivers, and groundwater, such as well water, does not count).

OPTION 2

Water Use Reduction, 1-3 Points

Landscaping with native and regionally adapted plants receives points based on how much is included in the total landscaped area.

Requirement/Prerequisite: Reduce aggregate water consumption by 20% from the baseline.



Native or Adapted Plant Area	
Percentage reduction from baseline	Points
> 25%	1
> 50%	2
> 75%	3

Achieving the 20% total water use reduction is a requirement for multi-family residential projects seeking LEED certification. Water efficiency credit points can be earned in either the Total Water Use or Outdoor Water Use credit, but not both.

INSTALL WATER METERING

to conserve water and maximize efficiency

Water Efficiency (WE) Credit: Water Metering, 1 point

Intent: To support water management and identify opportunities for additional water savings by tracking water consumption.

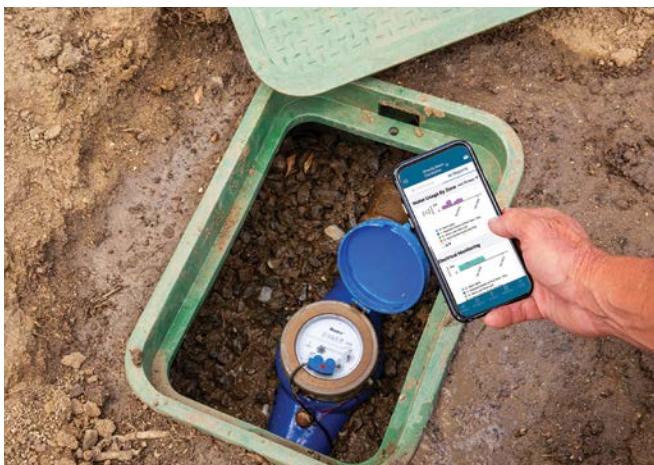
Meter Water Subsystems, 1 point

Install permanent water meters for two or more of the following water subsystems, as applicable to the project:

- **Irrigation:** Meter water systems serving at least 80% of the irrigated landscaped area. Calculate the percentage of irrigated landscape area served as the total metered irrigated landscape area divided by the total irrigated landscape area. Landscape areas fully covered with xeriscaping or native vegetation that requires no routine irrigation may be excluded from the calculation. *See Hunter Water Metering section below.*
- **Indoor plumbing fixtures and fittings:** Meter water systems serving at least 80% of the indoor fixtures and fittings described in WE Prerequisite Indoor Water Use Reduction, either directly or by deducting all other measured water use from the measured total water consumption of the building and grounds.
- **Domestic hot water:** Meter water use of at least 80% of the installed domestic hot water heating capacity (including both tanks and on-demand heaters). A single makeup meter may record flows for multiple water heaters.
- **Boilers:** A single makeup meter may record flows for multiple boilers.
- **Reclaimed water:** Meter reclaimed water, regardless of rate. A reclaimed water system with a makeup water connection must also be metered so that the true reclaimed water component can be determined. *See Reclaimed Water Solutions section on page 5.*
- **Other process water:** Meter water use of pools, and other significant water uses.
- **Cooling towers:** Meter cooling towers.

Hunter Water Metering

Detect, monitor, and report critical flow data with this robust flow sensor. Combine it with Hydrawise Software to generate reports and accurately track landscape water use.



Managing Multiple Water Sources

With the advanced features of the ACC2 Controller, you can manage multiple water sources to maximize water conservation.



With the **ACC2 Controller**, you can switch between potable, reclaimed, or other water sources through sensor inputs and controller responsive management.

RECLAIMED WATER SOLUTIONS

to meet and exceed agency requirements

Using reclaimed water offsets potable water use in the landscape and accounts for water savings in the Total Water Use credit. Hunter provides a suite of reclaimed water products marked with purple identifiers.



Rotors

A high-visibility purple cap identifies these rotors as using reclaimed water.



Spray Bodies

From a shrub riser to 12" pop-up, these spray bodies are all available with purple caps.

Valves

Built with robust diaphragms and purple identifiers, these valves can handle the tough conditions brought by reclaimed water.



Drip Control Zone Kits

Reclaimed water identifiers are available for both the valve and filter.



Dripline

Purple stripes discreetly identify reclaimed water use.

HUNTER IRRIGATION SOLUTIONS

to meet and exceed the needs of LEED projects

Pressure Regulation

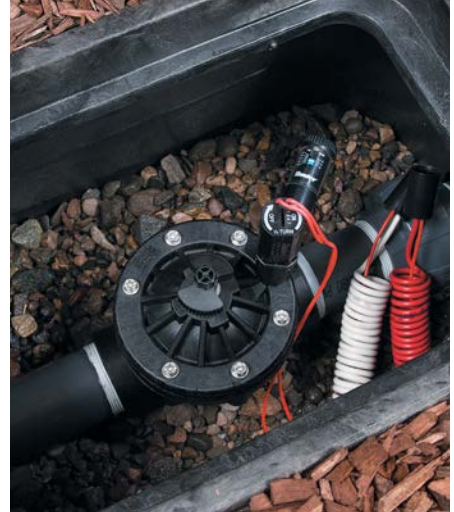
Allows application devices to work at peak performance and efficiency.



Pro-Spray PRS30 and PRS40 Sprinkler Bodies
30 PSI and 40 PSI regulated heads provide precise inlet pressure.



PGP Ultra and I-20 PRB Rotors
Built-in pressure regulation in the rotor body maximizes performance.



Accu Sync® Pressure Regulator
Pressure regulation at the valve ensures downstream efficiencies.

Check Valves

Prevent low-head drainage, landscape damage, and water waste.



Spray Heads
Factory-installed check valves prevent drainage.



Rotors
Factory-installed check valves save water.



Check Valves
Field-installed check valves can be used for laterals or emission devices.

Flow Sensing

Flow sensing with a master valve and controller response stops irrigation when leaks or clogs are detected.



Flow Management

Flow sensors and master valves monitor and react to system flows.



Master Valve

Heavy-duty brass or glass-filled nylon construction delivers durability, strength, and long-term reliability.



Controller with Flow Meter

Detects high or low flow, sends alert, and suspends zone.

Drip Irrigation

Drip devices deliver precise irrigation to plants throughout the landscape.



Hunter Dripline

Maximizes irrigation efficiency with direct water application.



Eco-Mat® System

Provides near-perfect distribution uniformity and water savings.



Drip Control Zone Kits

Stainless steel filters and pressure regulation help manage drip systems.

RECYCLED MATERIAL INCLUSION

Recycled Content Credits are recorded within the Materials and Resources (M+R) Credits section, which requires a minimum amount of recycled material. LEED specifically excludes mechanical, electrical, and plumbing components from the recycled content calculations since they are considered minor, removable materials.

Although Hunter products are excluded from this credit, we include recycled material in our products to help decrease our environmental footprint. Our goal is to maximize the amount of recycled material inclusion without jeopardizing product quality or durability.



ABS Plastic

Products manufactured with ABS black plastic contain up to 10% recycled material.



Dripline

Hunter Dripline is manufactured with up to 50% recycled material.



Subsurface Irrigation

Synthetic fleece products like the Eco-Mat and Eco-Wrap® Systems are manufactured with 100% recycled material.



Rotor Adjustment Tools

Plastic components of the Hunter Wrench are manufactured with 100% recycled material.

Hunter Industries manufactures and supplies best-in-class products that provide irrigation efficiency through application, control, and management features ideal for projects seeking LEED certifications. Partner with Hunter Industries to maximize your points and achieve real water efficiency.

Learn more about USGBC LEED Certification at: [usgbc.org/leed](https://www.usgbc.org/leed)

Learn more about the EPA WaterSense Budget Tool at: [epa.gov/watersense/water-budget-tool](https://www.epa.gov/watersense/water-budget-tool)

Website hunterirrigation.com | Customer Support +1-800-383-4747

Helping our customers succeed is what drives us. While our passion for innovation and engineering is built into everything we do, it is our commitment to exceptional support that we hope will keep you in the Hunter family of customers for years to come.

Denise Mullikin, President, Landscape Division

© 2026 Hunter Industries Inc. Hunter, the Hunter logo, and other marks are trademarks of Hunter Industries Inc., registered in the U.S. and certain other countries. ♻️ Please recycle.

RC-101 BR Multi Family B US 4/26